

PROCEED ARCHIVING SOLUTIONS

WORKBENCH IN-DEPTH OVERVIEW





WORKBENCH IN DEPTH VIEW

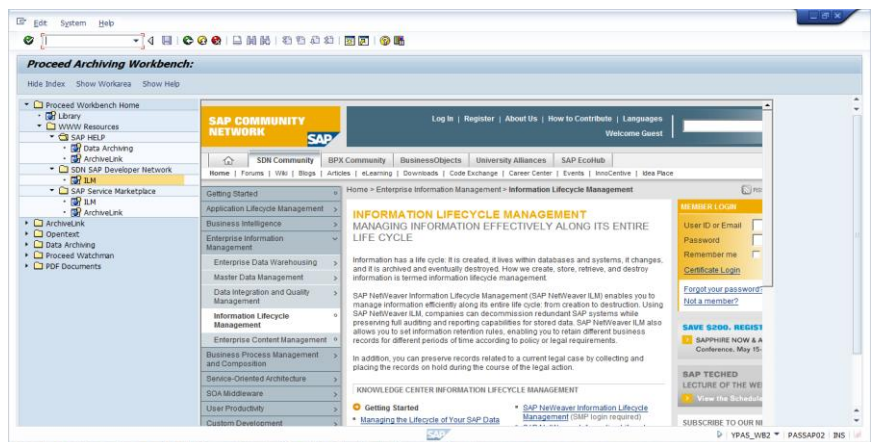
INTRODUCTION

The Proceed Archiving Workbench aims to bring together the most commonly used transactions and resources required for implementing a successful archiving project in a single, easy to use, logical hierarchy. Apart from the standard SAP transactions, the Workbench also includes access to the suite of PAS's own tools and reports that will streamline your project.

Through the implementation of numerous data archiving projects, and understanding our clients problem areas, PAS have developed a suite of technology tools that would be highly recommended to all our clients, to aid in the project implementation both from a technical and operational (business) perspective. Here is an in-depth overview of our Archiving Workbench.

PAS Workbench gives access to the most important Archiving Resources on the Web and directly from within SAPGUI.

Fig.1.0





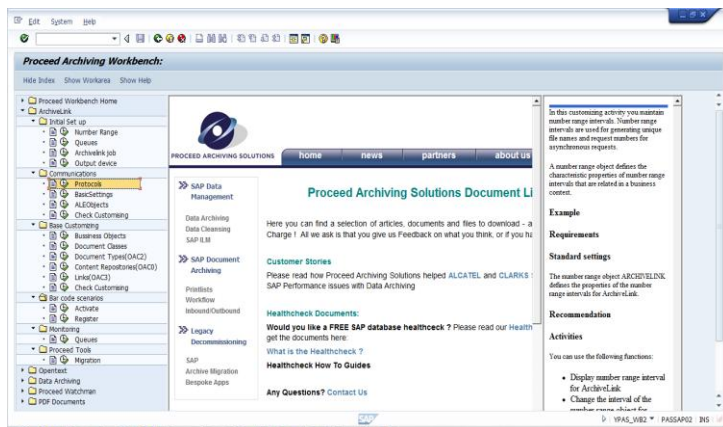
WORKBENCH IN DEPTH VIEW

ARCHIVELINK

Fig.2.0

This section provides access to the key SAP Archivelink transactions for the set-up and maintenance of archiving scenarios.

In addition, the Workbench has a “Help” section that gives information and assistance on the transactions and their usage.



The Workbench is split into 3 sections:

- The index hierarchy on the left
- The central Work area
- The help information

All 3 sections can be hidden or displayed dependent upon personal choice.



WORKBENCH IN DEPTH VIEW

ARCHIVELINK MIGRATION TOOLS

PAS has developed a generic program to migrate archived documents between any two archivelink content servers, irrespective of vendor.

This is a two stage process,

❑ Stage one is to select the link entries you wish to migrate.

❑ Stage two is to select those required documents from the "Source" content server, and re-archive them in the "Target" content server

You can run the migration in chunks (i.e. 1000, 12000 etc), in test run if required, or with summary or full logging..

Fig.3.0

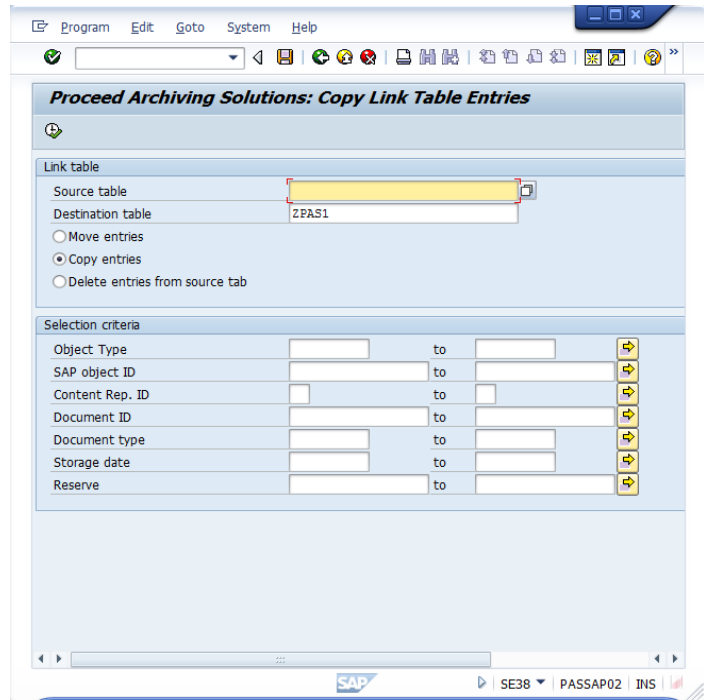
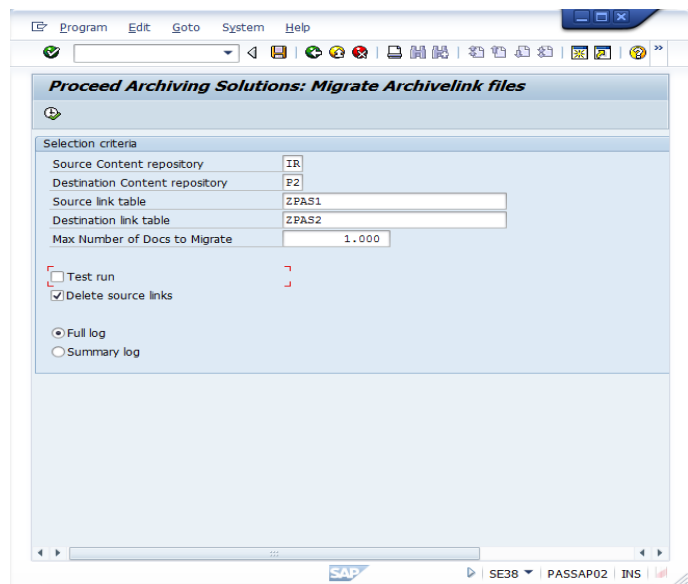


Fig.3.1





WORKBENCH IN DEPTH VIEW

DATA ARCHIVING

As you would expect from PAS, data archiving forms a central component to the Workbench, and in this section all the required transactions for customisation of archiving and retrieval are brought together in one place.

A key PAS development is the “Extended Analysis”. An invaluable tool, this program will search through a clients system to identify any tables included in archiving objects that have been extended with custom fields. It also will check the tables which are archived, and those tables from which there is deletion but no archiving. Crucially, there is the “Where Used” list that will list all screens and programs that would be affected by archiving the underlying tables for a given archiving object.

The Extended Analysis means that Technical and User Acceptance testing can be targeted in a controlled manner, concentrating on those reports and transactions that will be effected by archiving, reducing the testing time significantly, and the uncertainty from implementing data archiving.

Fig.4.0

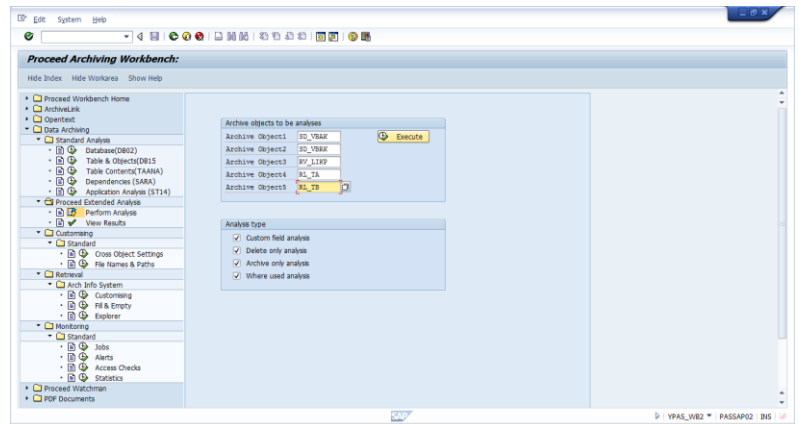


Fig.4.1

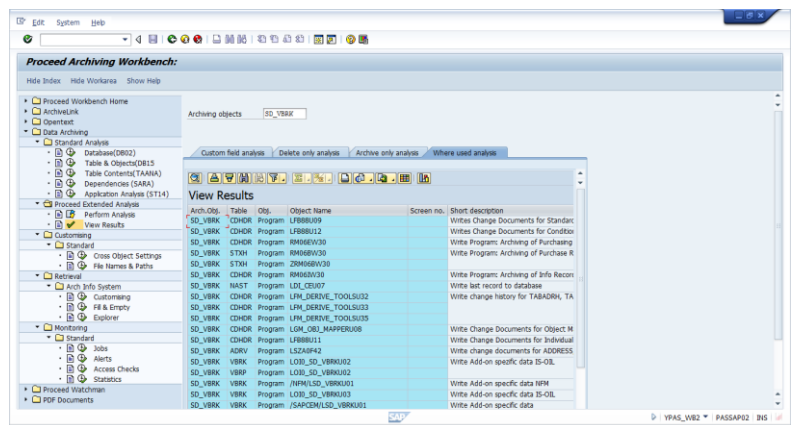




Fig.5.0

Table name	Sample Date	Oldest Date	Data	Data d.	Index	Idx dat.	Reserved	Res. dat.
REPOLOAD	17.02.2011	01.02.2011	731.520	5.776	1.448	0	734.936	6.848
TEST3	24.02.2011	23.02.2011	271.024	872	4.544	8	275.968	768
DYVLOAD	24.02.2011	23.02.2011	1.757.472	600	4.668	8	1.768.136	704
SNAP	15.02.2011	14.02.2011	9.056	528	1.144	32	10.648	840
so_2urlfns	24.02.2011	23.02.2011	422.252	496	37.088	40	467.808	840
DLSTFAB	24.02.2011	23.02.2011	462.720	256	547.176	288	1.018.456	576
REPOSRC	24.02.2011	23.02.2011	8.728.712	240	93.968	0	8.844.248	320
DL10NC	24.02.2011	23.02.2011	294.632	80	337.696	168	622.800	256
DOPS	24.02.2011	23.02.2011	12.264	80	384	0	14.136	64
TRDRIT	17.02.2011	26.01.2011	412.648	72	143.624	32	556.320	128
YPAS_AL_DOC_GROW	06.02.2011	05.02.2011	728	56	48	0	808	64
SWW_LOKIT	24.02.2011	23.02.2011	5.624	32	180	0	5.256	64
FAGLEXTEXT	19.02.2011	18.02.2011	344.136	24	118.816	0	462.808	0
SWPRODELOG	24.02.2011	23.02.2011	29.528	24	1.988	0	30.584	64
REPOTEXT	24.02.2011	23.02.2011	6.391.904	16	72.824	0	6.457.568	64
DDFTX	18.02.2011	17.02.2011	834.352	16	294.416	0	1.129.592	64
RUPRAREP	24.02.2011	23.02.2011	521.792	16	620.864	88	1.143.392	72
DDAZL	18.02.2011	17.02.2011	162.216	16	1.488	0	164.488	64
STN	17.02.2011	26.01.2011	74.872	16	51.344	16	126.536	64
ALALERTDB	24.02.2011	23.02.2011	5.192	16	2.816	24	8.008	72
TRTCD	24.02.2011	23.02.2011	2.840	16	10.232	16	25.160	64
FAGLEXA	24.02.2011	23.02.2011	1.444.864	8	1.447.240	16	2.892.084	72
ACCTIT	24.02.2011	23.02.2011	681.704	8	77.816	8	759.432	72
BNF	24.02.2011	23.02.2011	495.480	8	399.820	48	897.008	280
TOAR	24.02.2011	21.02.2011	362.304	8	314.948	0	677.464	0

WATCHMAN

The Watchman allows non-basis users a view of the database and it's objects that can normally only be viewed from DB02. The largest and fastest growing tables and indexes (and LOBs (Large Objects) in Oracle) are displayed, as is a picture of the overall database. All results can be easily exported to spreadsheets if required.

Watchman will also report on and supply a history of the number of Archivelink objects which have been archived in the content server/s, listed by Content repository, Archive Object or Archive Document type. Drilling down by Archive object, the data is broken down by year and period. Similarly, each table can be displayed with the archiving object(s) that remove data. The watchman will also report on and supply a history of the number of Archivelink objects archived in the content servers, listed by Content Repository, Archive Object or Archive Document type.

Fig.5.1

Doc. type	Description	Date	Objects
ZDL_DOC	Doclink Word Document	20.10.2010	1
DRIV	DMS objects		3
SDOORDER	Order Confirmation		2
MRDRVOICE	Incoming Invoice		2
ZFL_TEST1	F ARCHIVE test		1
RECP4410	Master Data Summary		1
SDORVOICE	Billing document		3,373
FDRINVEL	Incoming invoice preliminary posting		6
ZFL_TEST2	F ARCHIVE doc test		1
PRICOMPLAI	PP customer complaint		4
SOBETMAP	BETMAP file		1
RECP4400	General correspondence		1
DAKT_EXTR	DAKT: Extract file		4
ZDL_H5G	Doclink H5G file		1
SDORBOUND	Incoming Office original		41
ZDL_DOC	Duallink Word Document	21.10.2010	1
DRIV	DMS objects		4
DAKT_EXTR	DAKT: Extract file		3
SDOORDER	Order Confirmation		2
ZDL_H5G	Doclink H5G file		1
RECP4410	Master Data Summary		1
SDORBOUND	Incoming Office original		41



WORKBENCH IN DEPTH VIEW

WATCHMAN ARCHIVE - OBJECT ANALYSIS

The next logical step of Watchman is to take those database tables, and map them to archiving objects in SAP®, displaying the overall size of data stored by that object, and the tables (and their individual sizes) that make up the archiving object, by drilling down by Archive object, the data is broken down by year and period. Similarly, each table can be displayed with the archiving object(s) that remove data.

Fig.5.2

Object	Client Alloc.	Allocated Table Size (KB)	Number of Table Rows	Segment Type	Table Description
PI_BS_DATA	900	10,257,791,80393008	5,203,423	PI Special Ledger	Total and Line Items
PI_BS_DATA	800	10,257,654,01444832	5,203,259	PI Special Ledger	Total and Line Items
HRCL		17,149,840,00000000	80,00		TABLE HR Cluster 2
PROX		16,297,784,00000000	89,72		TABLE Index of Payroll Result Lines -> Posting Lines
SOGL		14,983,876,00000000	63,02		TABLE Table Fields
REPORG		13,247,520,00000000	80,00		TABLE Report Source Code
REPTEXT		11,249,552,00000000	50,00		TABLE Report Texts
SM_MENU		9,056,336,00000000	80,00		TABLE Menu menu texts
EDIT		7,817,920,00000000	84,76		TABLE Change & Transport Systems: Key Entries of Requests/Tasks
TRGFLXEX		7,200,240,00000000	89,84		TABLE General Ledger: Actual Line Items
SMUCT		6,480,896,00000000	80,00		TABLE Doc. Meta
STRUCT		6,282,584,00000000	87,75		TABLE Function Module Short Texts
STRM_LINK		6,399,136,00000000	43,42		TABLE Link Between Concept and Associated Terms
CLCA		5,203,840,00000000	84,26		TABLE HR Cluster 4
SMTEXTS		5,088,784,00000000	80,00		TABLE Menu Panel: Texts
CLCA		4,248,072,00000000	87,80		TABLE EC-PCA: Actual Line Items
SMIO		4,149,264,00000000	84,29		TABLE Messages
SMTEXT		3,891,780,00000000	80,00		TABLE Industry texts
EDIT		3,854,256,00000000	89,06		TABLE Change & Transport Systems: Object Entries of Requests/Tasks
SMTEXT		3,240,036,00000000	42,88		TABLE Index of Old <-> New Document Lines for 'W' Results
SMTEXT		3,144,496,00000000	89,41		TABLE Terminology Text Table
SMTEXT		1,717,400,00000000	42,44		TABLE Information 1001 PM Table



WORKBENCH IN DEPTH VIEW

WATCHMAN ARCHIVE - OBJECT ANALYSIS

Drilling down by Archive object, the data is broken down by year and period.

Fig.5.3

Table Name	Allocated Size (KB)	Index #	Number of Rows	Segment Type	Table Description
Client Alloc. A	20,513,448,000,000,000	58,31	10,410,787		TABLE: Actual Line Items Table for Cost of Sales Accounting
Tree Alloc. A	10,257,791,965,800		5,205,432		FI Special Ledger: Totals and Line Items
Period Alloc. A	6,739,435,965		3,420		
Year Alloc. A					
1994	0,00				
Period Alloc. A					
001	0,00		157,647,024		50
002	0,00		82,760,020		42
003	0,00		78,523,126		40
004	0,00		270,422,060		88
005	0,00		114,262,130		59
006	0,00		147,794,679		75
007	0,00		141,581,154		62
008	0,00		149,471,267		66
009	0,00		145,530,075		64
010	0,01		1,042,158,702		539
011	0,01		1,044,122,485		540
012	0,02		2,397,046,972		1,705
1995	0,13		25,550,151,629		19,122
1996	0,43		120,440,343,944		69,204
1997	0,30		62,097,399,009		31,912
1998	0,35		72,590,703,690		36,342
1999	0,46		94,247,462,270		47,827
2000	10,45		2,144,571,293,149		1,086,206
2001	16,60		3,408,019,218,921		1,727,914
2002	14,21		2,874,422,785,206		1,450,662
2003	2,68		550,790,182,944		279,507
2004	1,83		376,409,321,950		191,113
2005	0,88		179,749,321,490		91,216
% total	0,78		147,934,946,876		69,409

Fig.5.4

Similarly, each table can be displayed with the archiving object(s) that remove data. Drilling down the data is broken down by Archive object, year and periods

Table Name	Number of Rows	Object	Table Description
IMP_LIS	800	2,139,300,198,049	1-
IMP_RECSD	800	1,800,494,213,001	1-
IMP_RECSD0	800	1,800,494,894,000	1-
PA_LDOC	800	1,490,243,479,844	1- PA: Long Term Documents
PA_LDOC0	800	1,490,243,129,813	1- PA: Long Term Documents
DOC	800	1,432,439,154,043	123,501 Doc: Intermediate Documents
FI_DOCUMENT	800	1,101,390,233,044	204,959 Financial Accounting Documents
Table Segments			
Table Size per Object			
Client Alloc. A	304,899		Accounting Document Header
Year Alloc. A			
1994	1,28		27,985,696,949 Financial Accounting Documents
Period Alloc. A			
01	0,01		186,420,721 50
02	0,01		117,262,030 39
03	0,01		248,477,001 41
04	0,01		202,524,930 57
05	0,01		202,524,930 57
06	0,01		200,914,707 65
07	0,01		220,830,991 34
08	0,01		101,940,014 31
09	0,00		99,484,040 28
10	0,02		11,242,812,746 1,199
11	0,42		9,120,173,787 2,864
12	0,28		6,052,904,981 1,712
1995	0,56		12,194,237,792 3,412
1996	4,90		90,261,902,461 37,463
% total	1,40		64,744,949,704 4,747



Fig.6.0

PDF RE-PRINT

Keeping exact copies of printing correspondence from SD & MM is often a key business requirement, such as the ability to reproduce a VAT invoice for 7 years for UK HMRC. If you have archived the underlying data, it is no longer possible to re-print these outgoing documents, so PAS have developed a solution that allows a user to go back in time and re-create such documents, in PDF format for storage in a content repository. Because invoice layouts may change over time, the PDF must be created before archiving takes place.

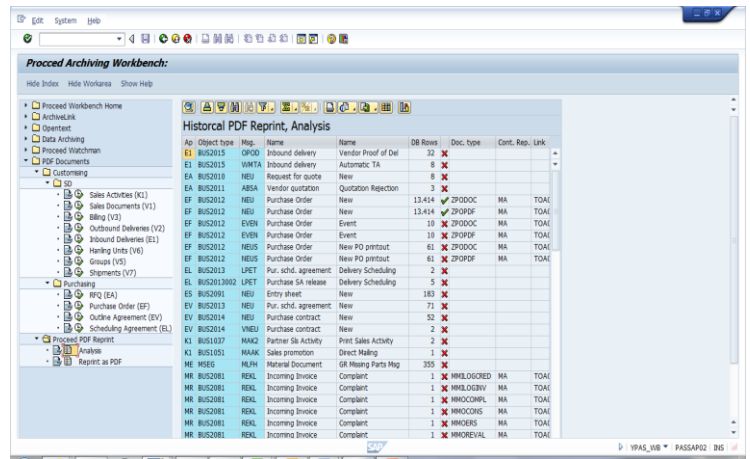
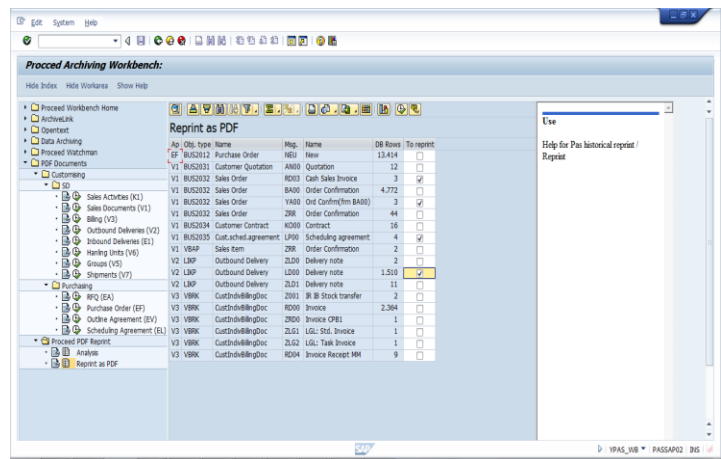


Fig.6.1

- The first stage is a check on the customising for outgoing documents in SD/MM (using NAST based output controls), since the reprint will not work unless each output type is configured for PDF creation.



- The second stage is the actual processing of the individual documents, and the creation of the PDFs.

- Once the PDF has been created and archived, it is removed from the list of available documents to reprint.



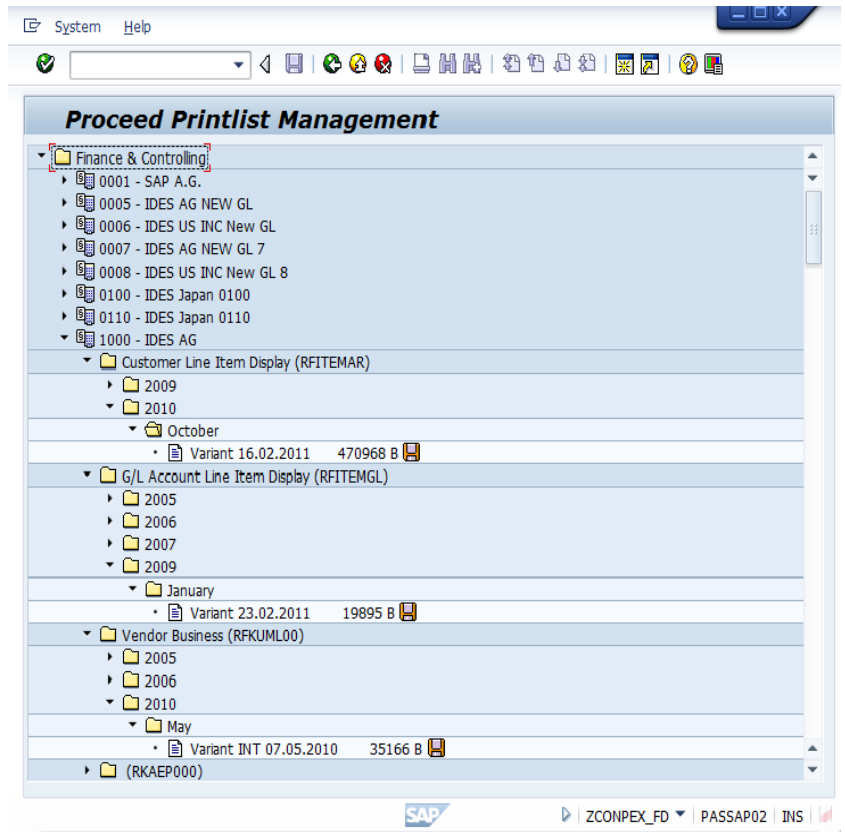
PRINTLIST MANAGEMENT

A printlist is essentially any SAP spool output saved electronically in an archive server. In the most basic form, it could be a list of users, but equally it could be a Tax report or Vendor listing. With the correct application of thought, the PAS Printlist Management tool can become an invaluable library of reports those users can access without the need to execute the report, possibly multiple times in SAP®.

For instance, if the business knows there is a set of specific reports they will require every end of Month, then these reports can be scheduled automatically in the background, and stored in the archive. Rather than print the report out, or have multiple users within one department execute a particular report in SAP®, they can simply go to the Printlist Finder and view or download the report. The tool can be customised so that the nodes match a set of parameters for that report type (i.e. FI/CO reports by Company Code \ Report type \ Fiscal Year, and SD reports by Sales Org \ Distribution Channel \ Division). When the printlist is created, the assigned Archivelink document type then defines the node parameters that can be applied.

When coupled with SAP GUI Scripting then the Print-list Management tool can provide a snapshot of data prior to any data archiving, again, allowing users to pull reports back from the archive rather than run expensive (processing) reports against archived data.

Fig.7.0





PROCEED ARCHIVING SOLUTIONS

SERVICES

- SAP DATA HEALTHCHECK
- STRATEGY DEVELOPMENT
- ECM ADVICE
- ECM INSTALLATION
- ECM COMMISSIONING
- DATA ARCHIVING TRAINING
- DATABASE RE-ORGANISATION
- LEGACY SYSTEM PROJECTS
- DOCUMENT SCANNING
- SAP INVOICE MANAGEMENT

SERVICES

We Offer The Following Services :

- Free SAP Database [Health Checks](#)
- Developing strategies to control SAP database growth
- Advice on selecting a suitable Enterprise Content Management solution
- Installation and commissioning of ECM solutions
- SAP consultancy and configuration skills to implement Archiving Strategies
- Data Archiving Training
- Database Re-Organisation
- Legacy System Decommissioning Projects
- Turnkey Document Scanning and Archiving solutions for SAP users
- SAP Invoice Management by Opentext Implementation and customising



PROCEED ARCHIVING SOLUTIONS

PAS consultants have been helping customers across every sector of the economy including:

- FMCG
- Public Sector
- Heavy Engineering
- Banking
- Construction
- and many others...

OUR CLIENTS INCLUDE:

- GSK
- National Grid
- Warburton's
- Lloyds TSB
- British Airways
- Clarks Shoes
- Burberry
- Orange



PROCEED ARCHIVING SOLUTIONS

PROCEED ARCHIVING SOLUTIONS

If you would like any
further assistance
please do not hesitate
to contact us

Proceed Archiving Solutions Ltd

The Nexus Building

Broadway

Letchworth

SG6 3TE

T. 01462 688 310

F. 01462 712 146

info@proceedarchiving.com